

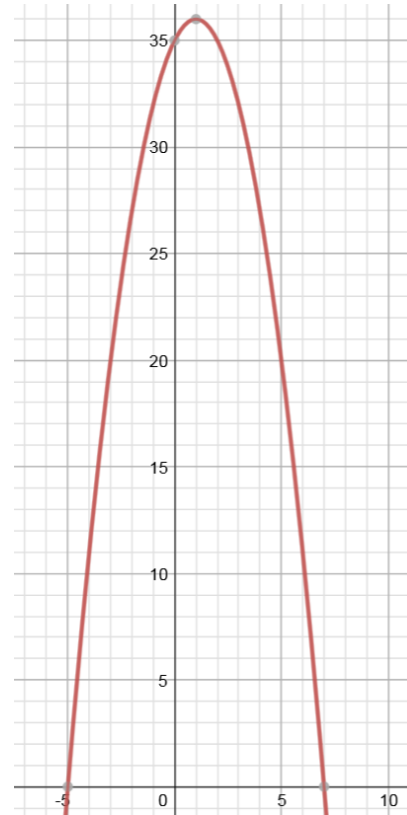
## LRAM / RRAM / MRAM

Use LRAM, RRAM, and MRAM to approximate the area under the curve of  $f(x) = -x^2 + 2x + 35$  on  $[-5,7]$  using 4 subintervals.

LRAM:

RRAM:

MRAM:



If we were approximating the area under the function on the interval  $[-5, 1]$ , would LRAM over-approximate or under-approximate the true area? Why?